

Kaleva-Hakametsä - paikalliskeskuksen ydinalue

Viitesuunnitelma
12.11.2021



Näkymä saavuttaessa Sammonkadulta

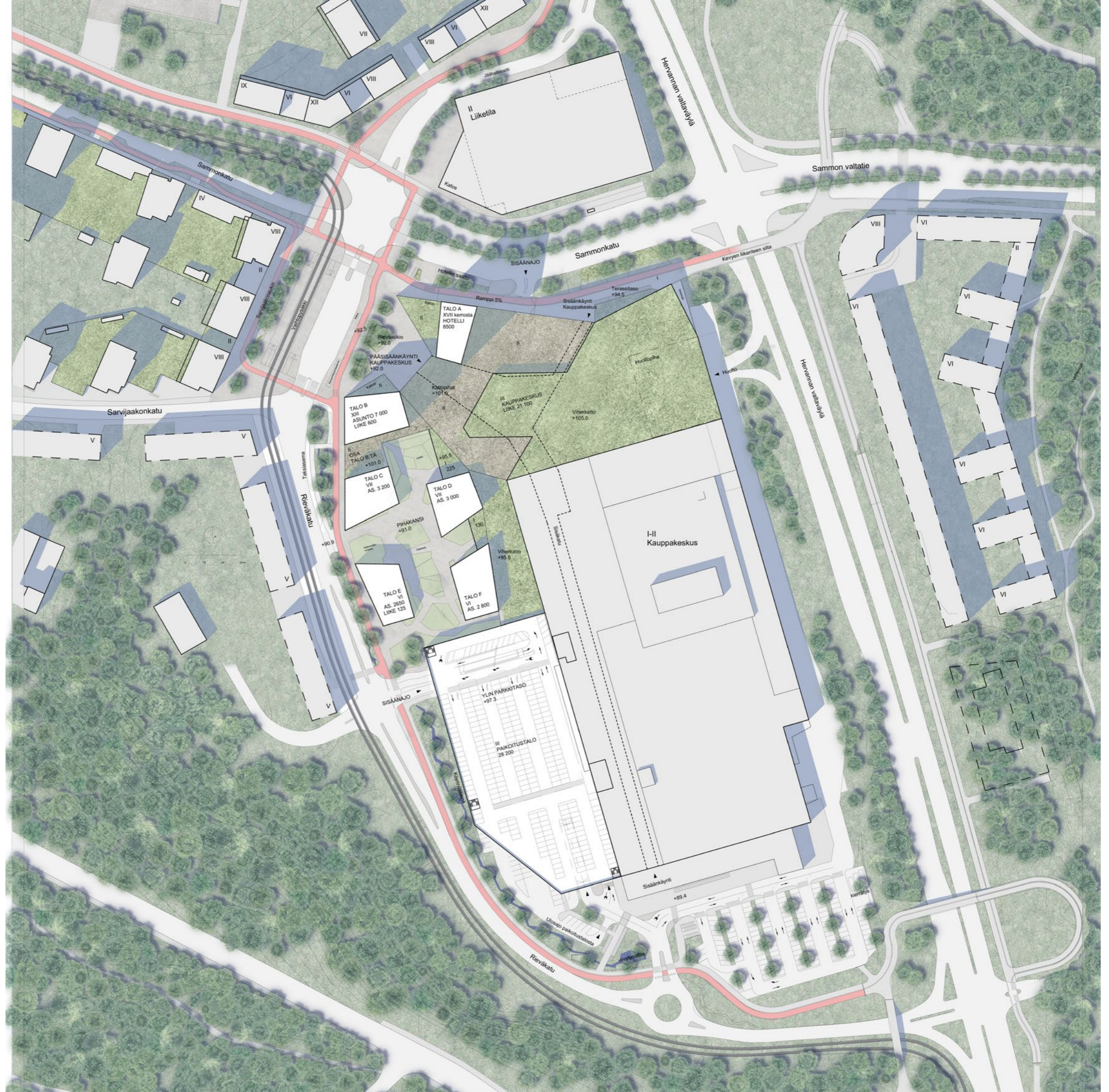


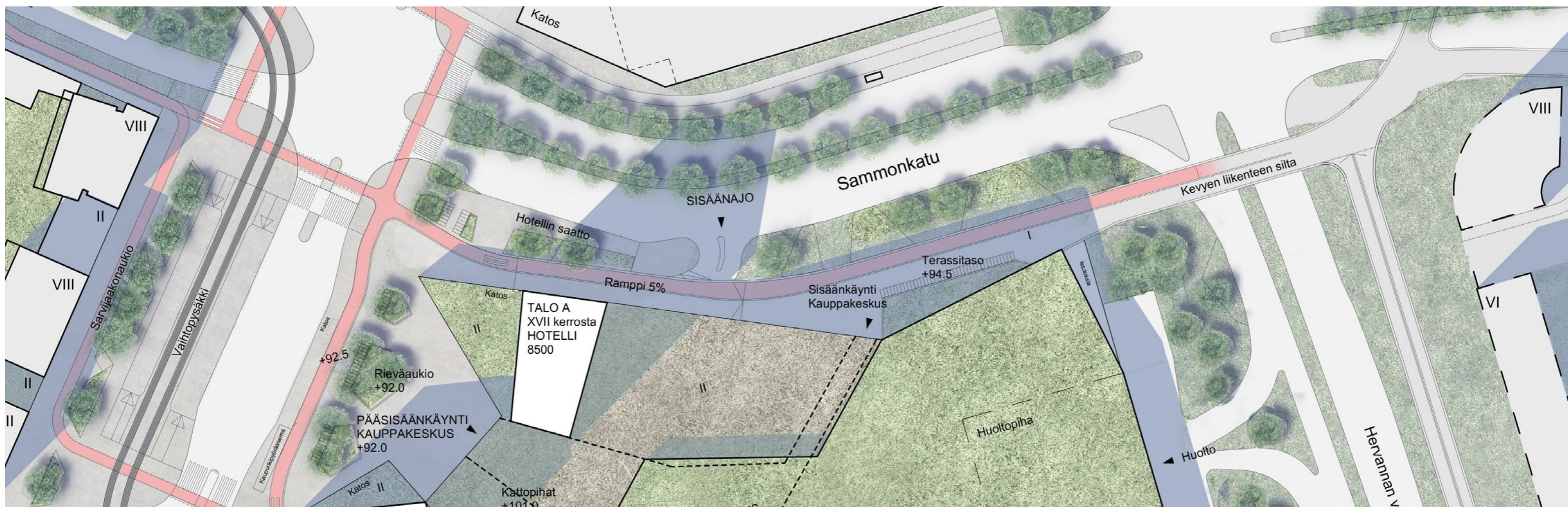
Näkymä Rieväkadulta



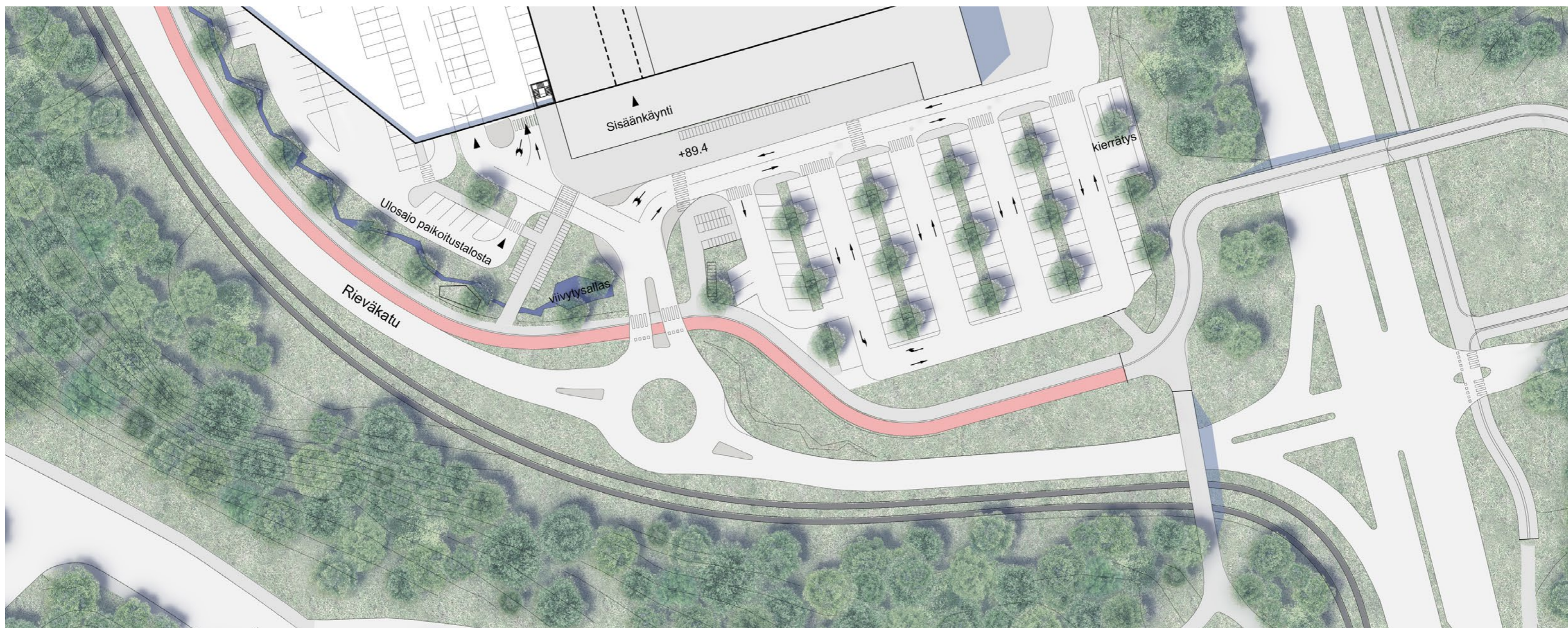
Alueen yleishahmo

Asemapiirros



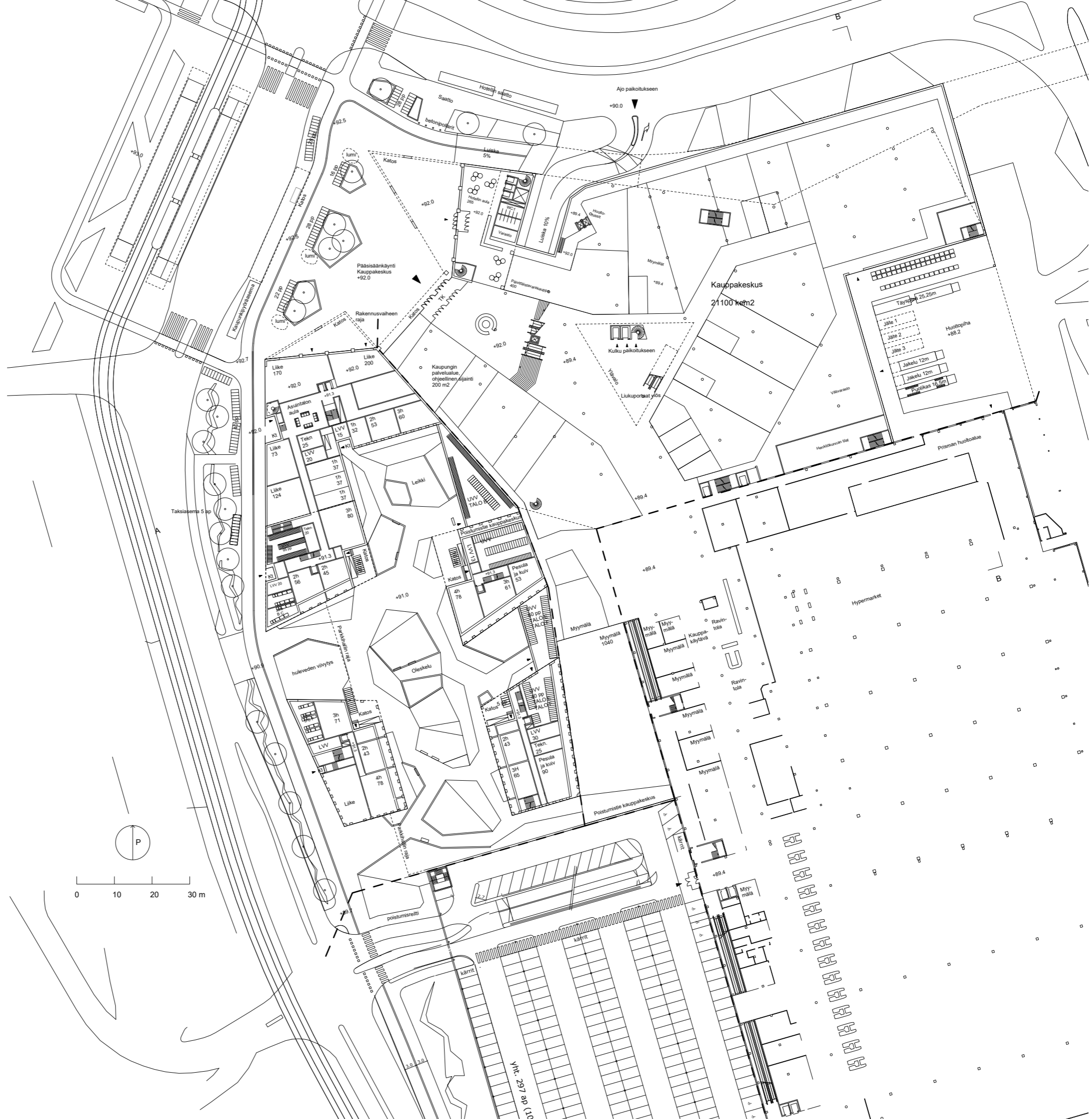


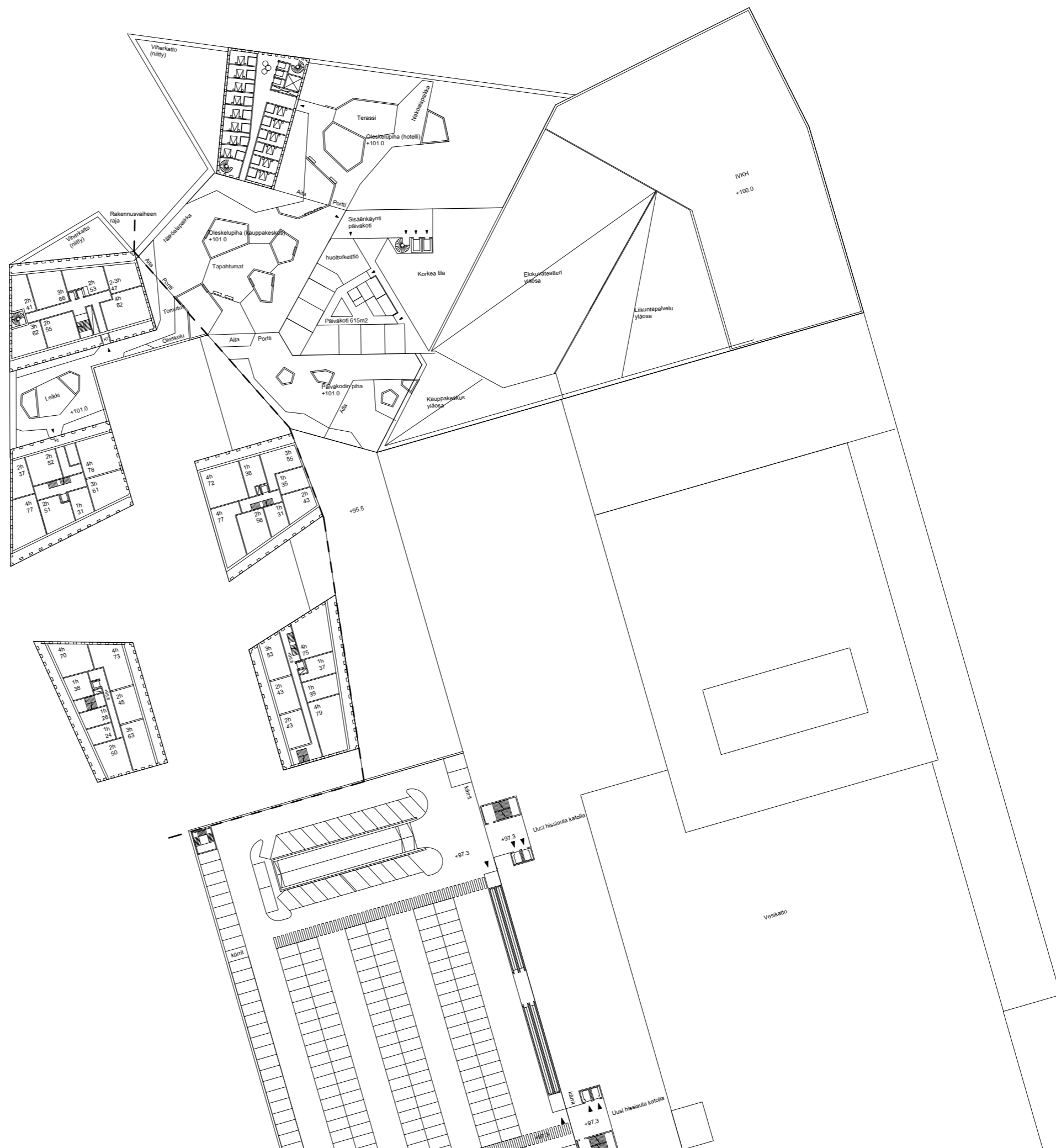
Pohjoinen kevyen liikenteen yhteys



Eteläinen pysäköinti- ja sisäänkäyntialue

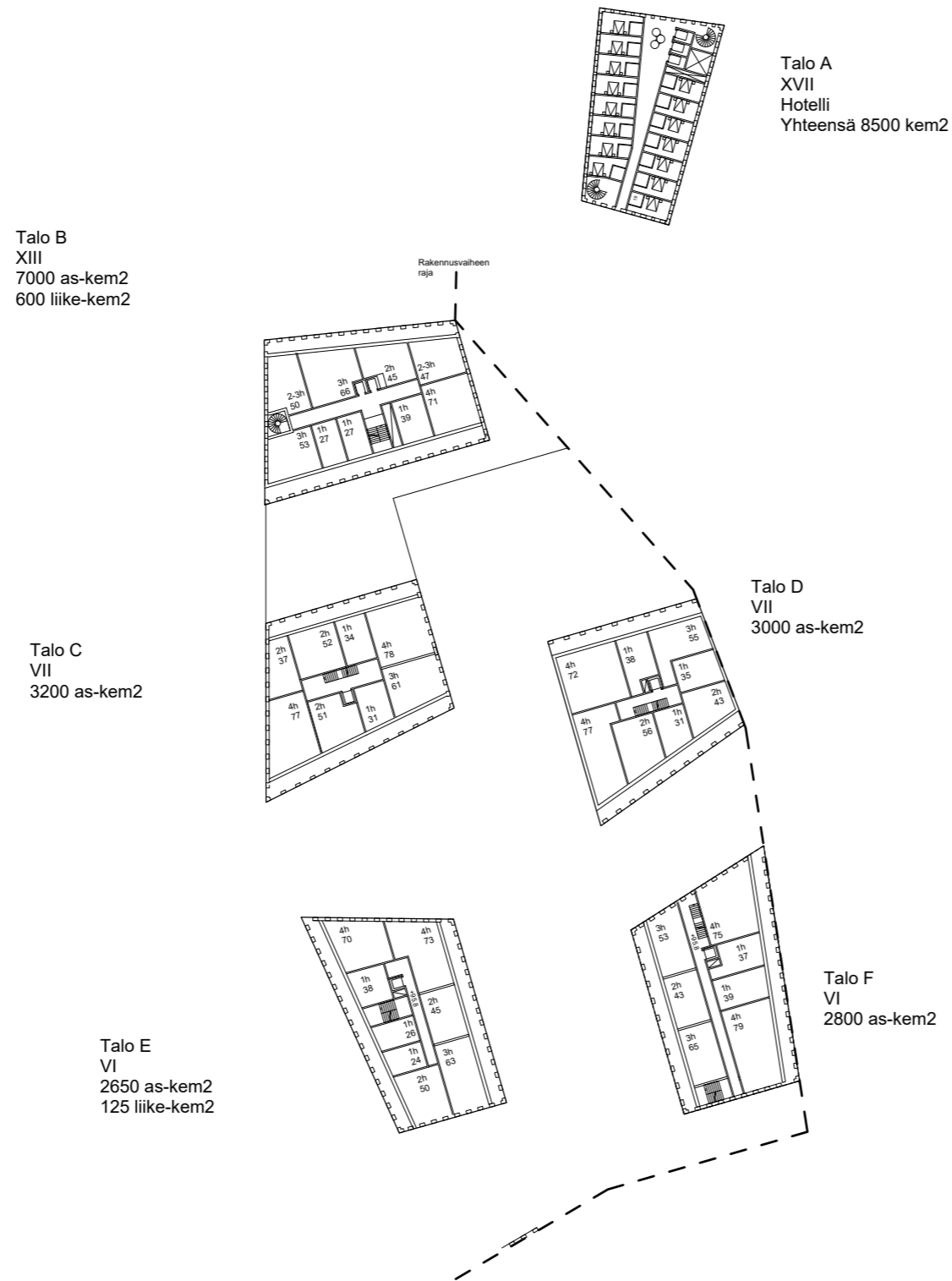
Maantaso
 +89.4 ... +92.5





Kolmas kerros
+101.0

Tyypikerros



Pääkäyttötarkoituksen mukainen
kerrosala
(Ulkoseinästä laskettu
250mm kerrosalaan):

Asuinkerrosalaa yhteensä
18 650 kem2

Liikekerrosalaa yhteensä
725 kem2

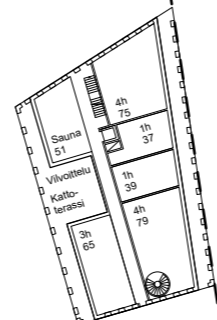
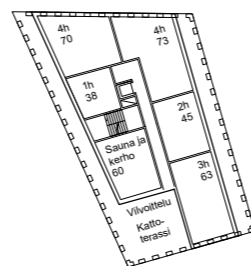
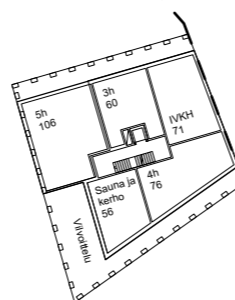
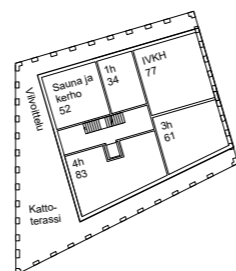
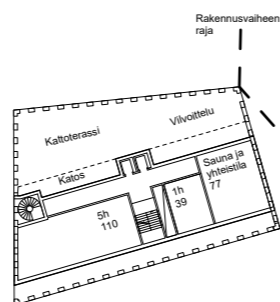
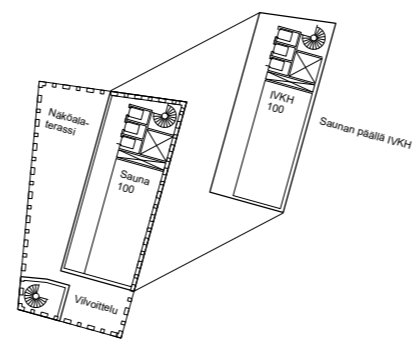
Autopaikkatarve:

$18\ 650\ kem \cdot 1/130\ AP/kem2 = 144\ AP$
 $600\ kem2 \cdot 1/100\ AP/kem2 = 8\ AP$

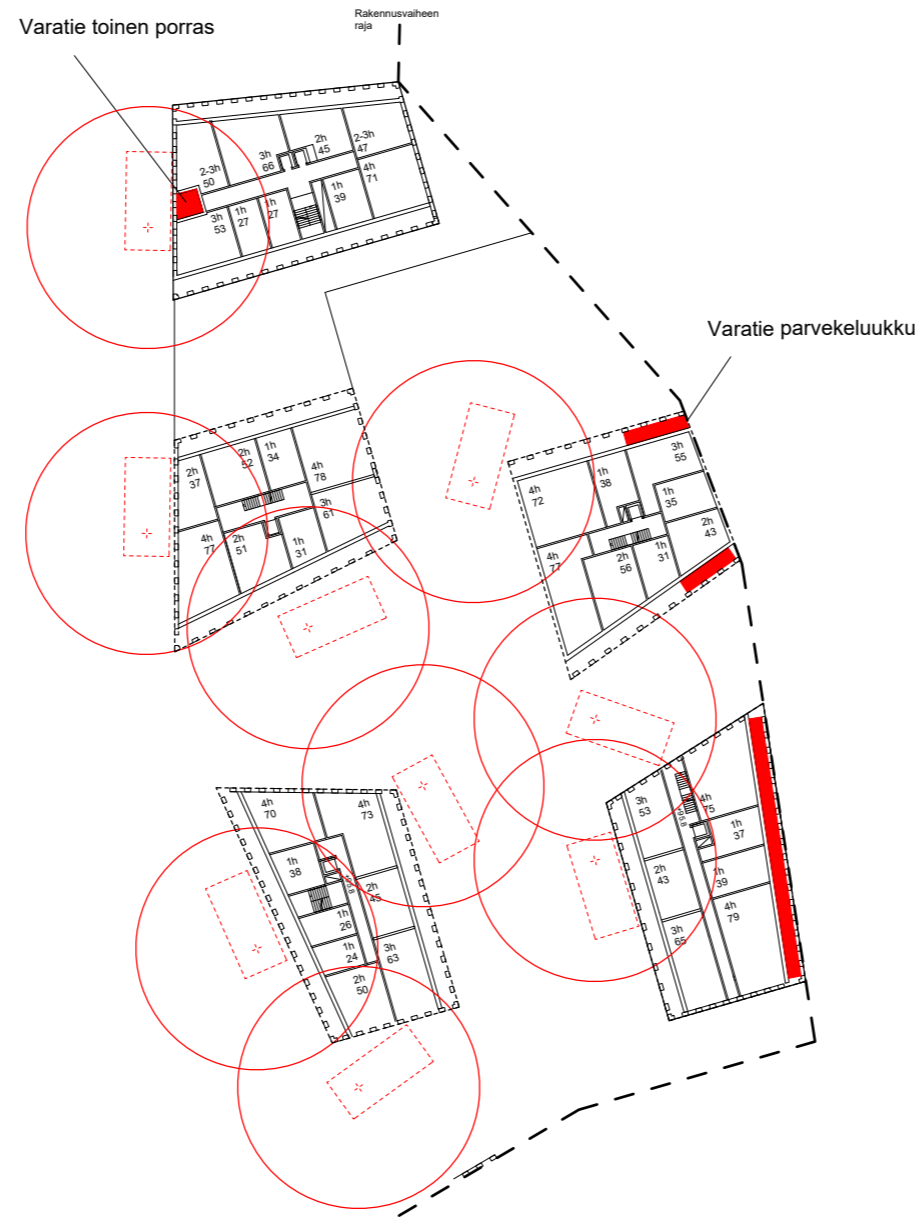
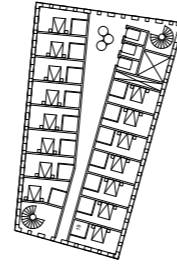
yhteensä 152 AP

Polkupyöräpaikkatarve:

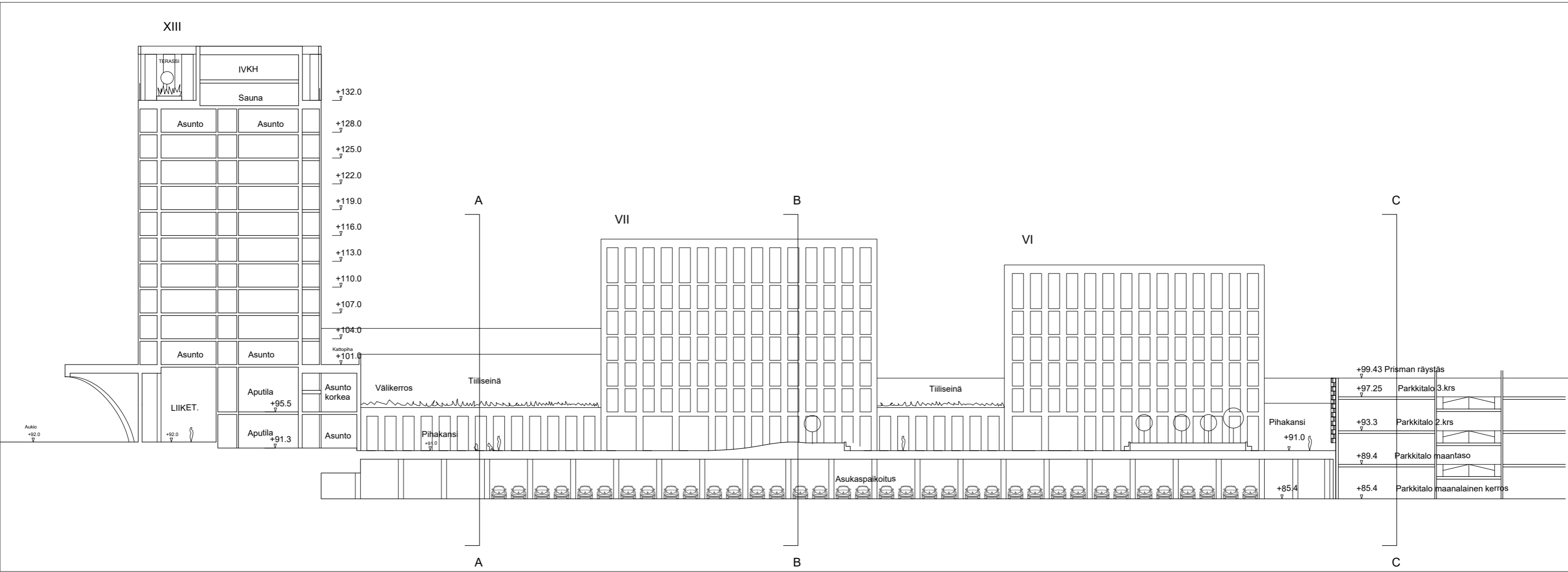
$18\ 650\ kem2 \cdot 1/40\ PP/kem2 = 467\ PP$

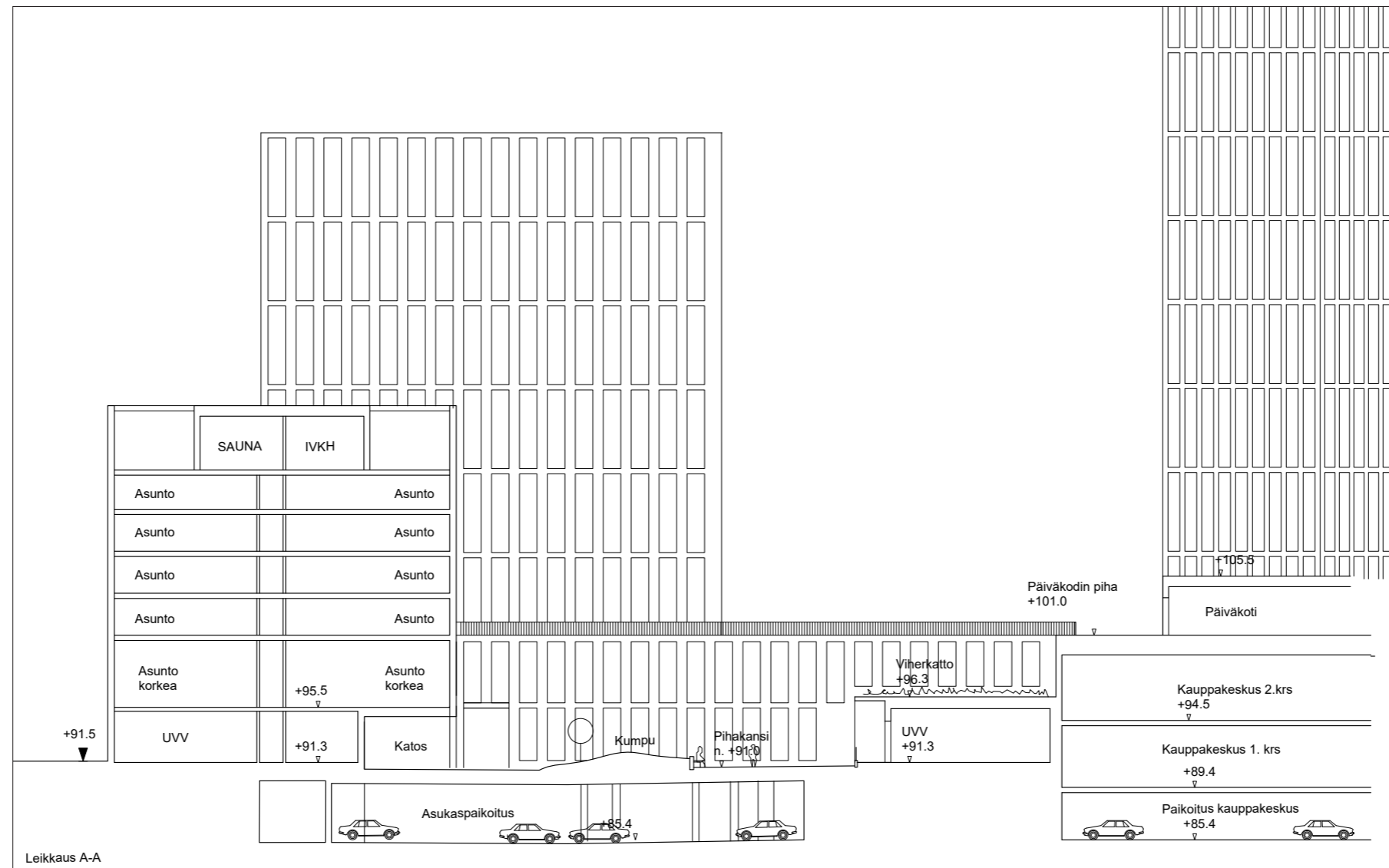


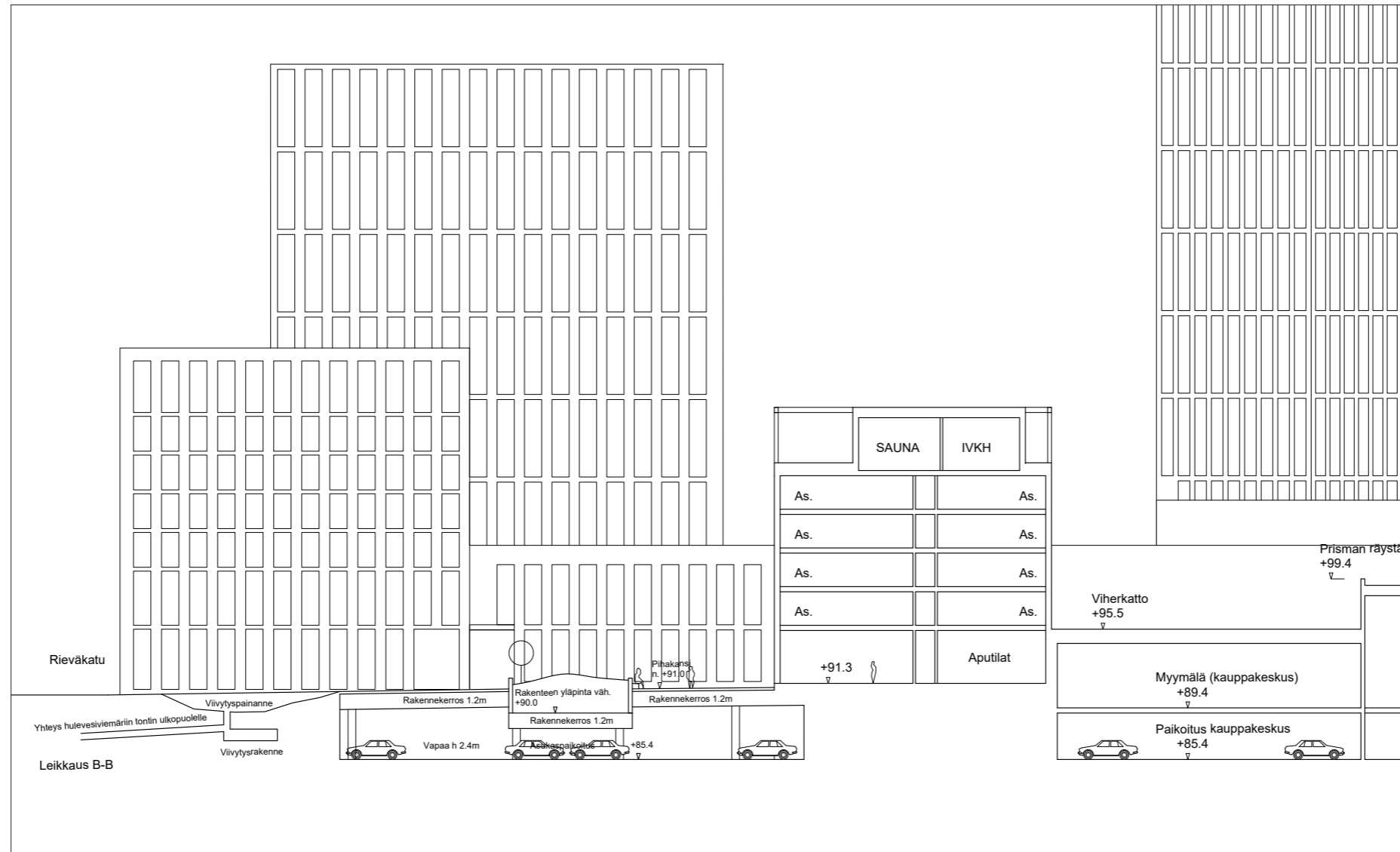
Kattokerrokset

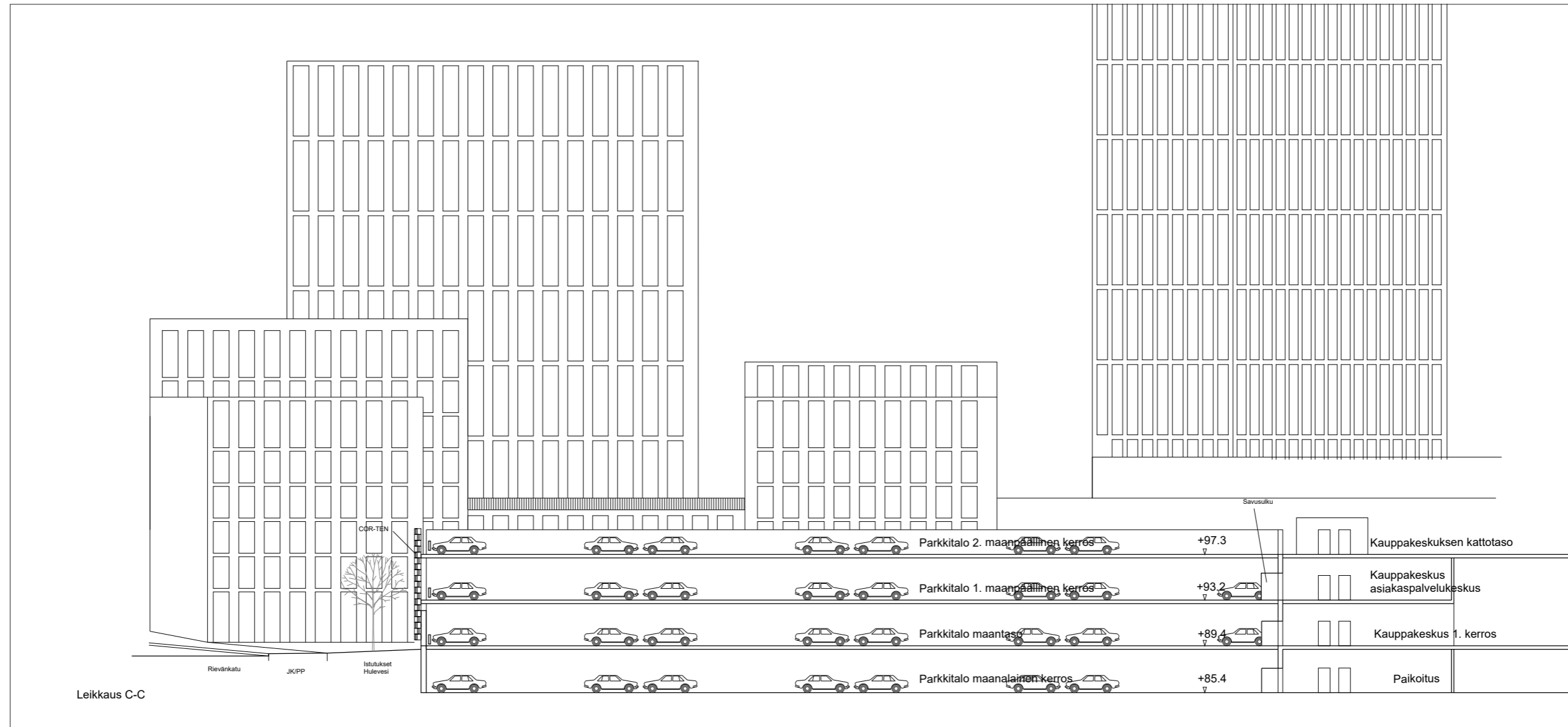


Pelastuskaavio











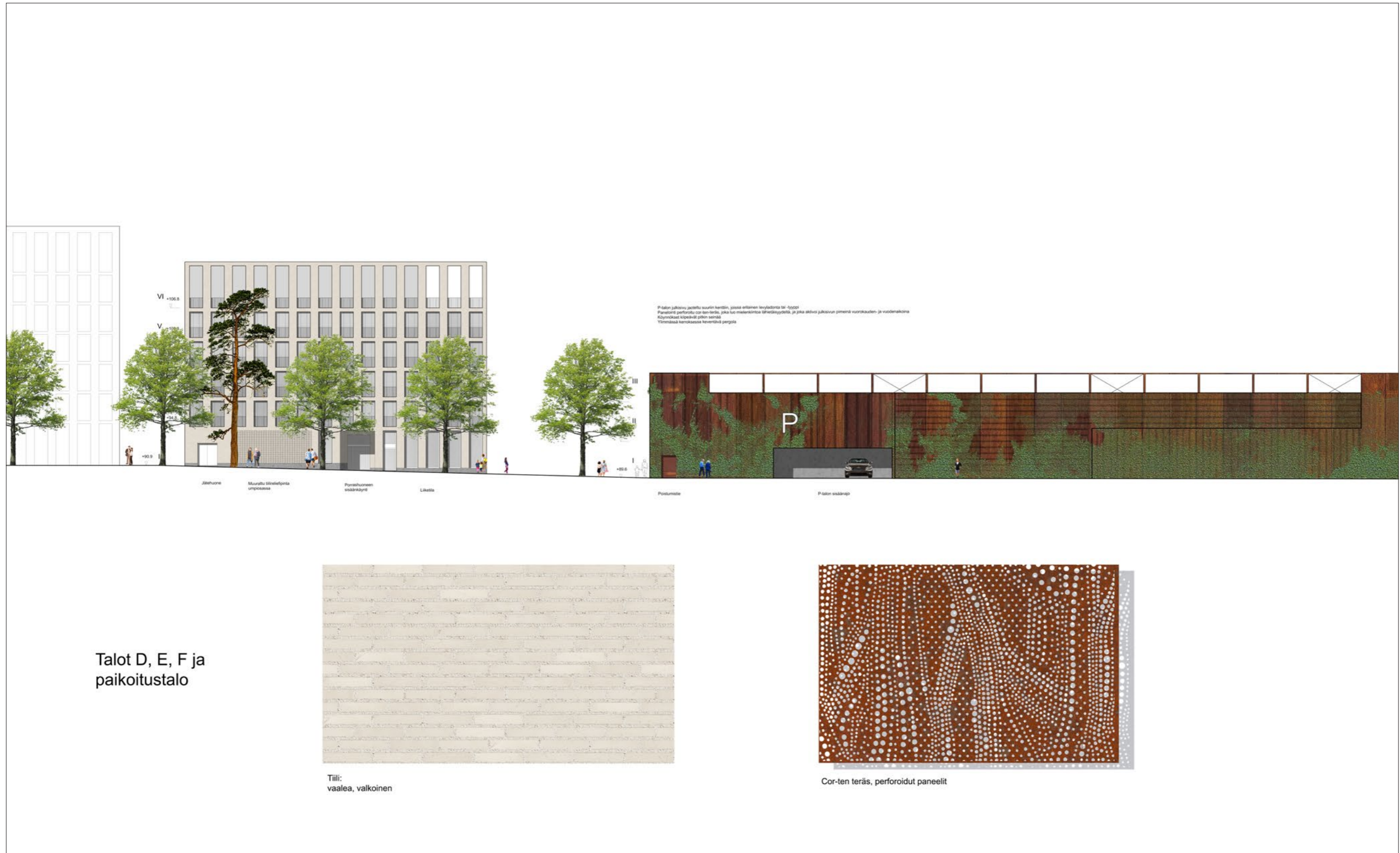
Julkisivuote Sammonkadulle



Talot B ja C



Tiili: tumma, musta

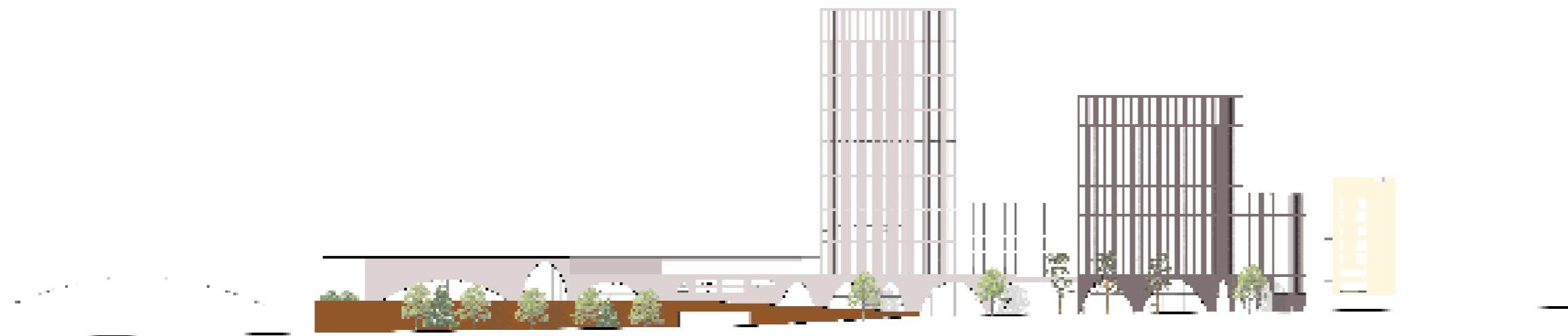




Julkisivuote Hervannan valtaväylälle



01010 - 01010



01010 - 01010



Lahdelma & Mahlamäki arkkitehdit
VSU maisema-arkkitehdit
WSP Finland

Tehtaankatu 29 A
FI-00150 Helsinki, Finland

info@lma.fi

www.lma.fi
+358 10 315 4300